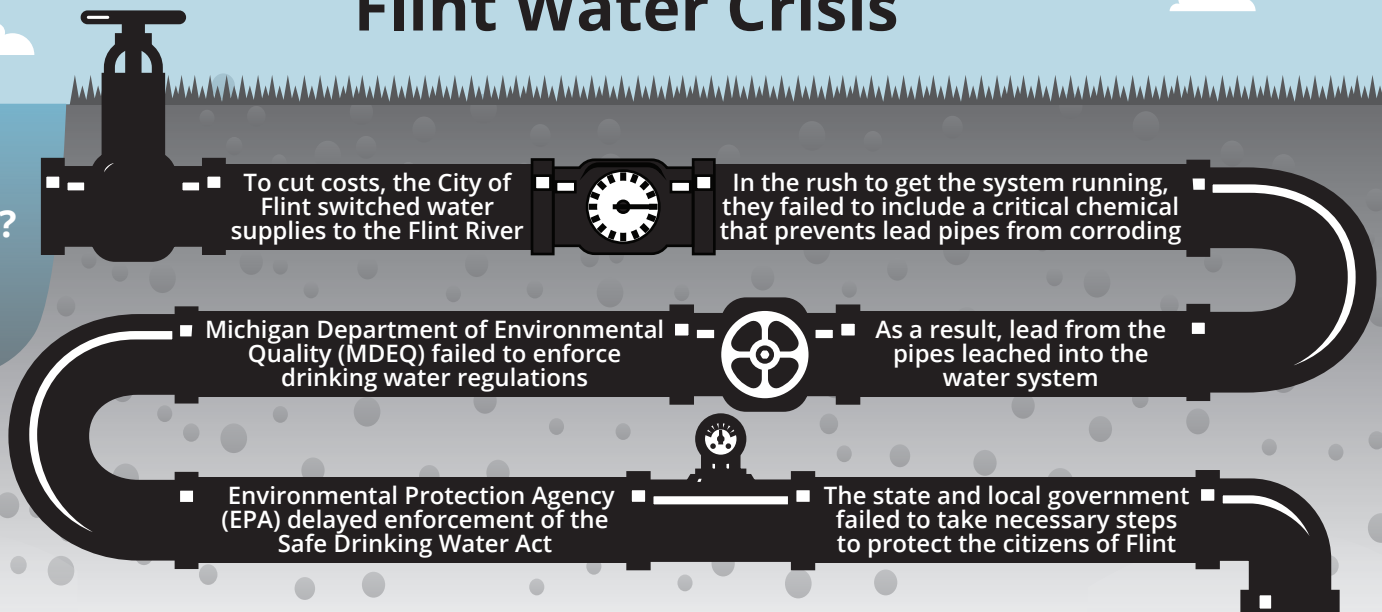


Flint Water Crisis

HOW IT HAPPENED?



FLINT BY THE NUMBERS

99,000 population

30,000 approximate number of children

41.6% population below poverty line

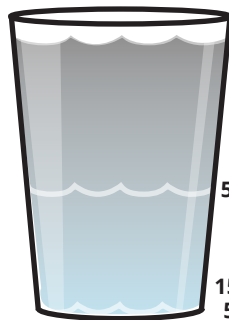
\$24,679 median income

\$36,700 median house value

51,321 housing units

8,000 lead service lines to replace

Flint Lead Levels (in parts per billion)



13,000 ppb Highest level found in Flint home

5,000 ppb = toxic waste

15 ppb = EPA requires action
5 ppb = Cause for concern
0 ppb = Safe lead levels

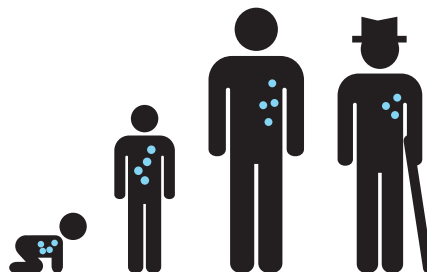
Lead in Children



One microgram of lead per deciliter of blood can cause a decrease in IQ



33 micrograms highest levels of lead seen in Flint child



Affects of lead poisoning remain throughout life

"We had never seen such sustained high levels of lead in 25 years of work."

Dr. Mark Edwards, Professor, Virginia Tech

Lower IQ
Vision loss
ADHD
Attention issues

Hypertension
Kidney damage

Infertility
Impaired immune system



Memory loss
Hearing loss
Hair loss
Skin lesions

Depression
Cardiovascular disease

Pregnancy complications
Seizures

WHAT'S NEEDED?



blood monitoring



replace pipes



special education



health care



counseling



mental health facilities